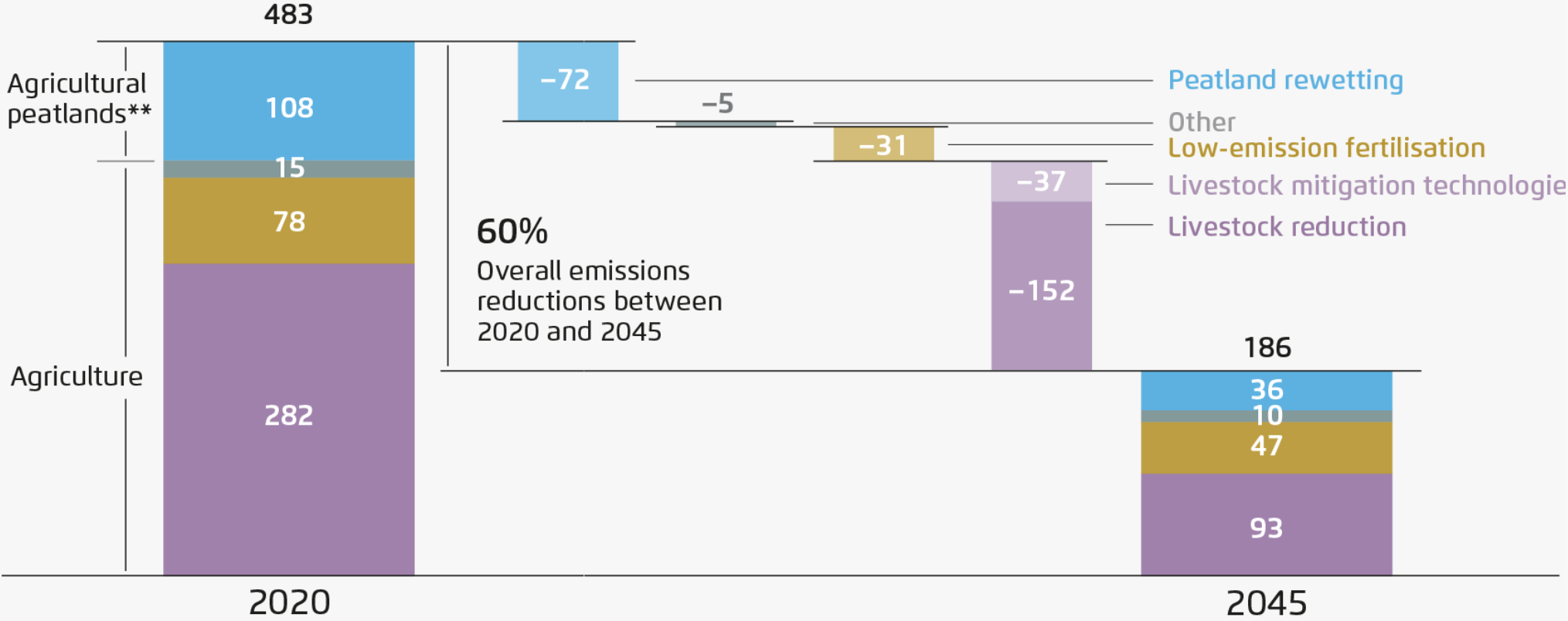

Agriculture, forestry and food in a climate neutral EU

The land use sectors as part of a sustainable
food system and bioeconomy

11th February 2025

Greenhouse gas emissions reductions from EU agriculture and agricultural peatlands between 2020 and 2045

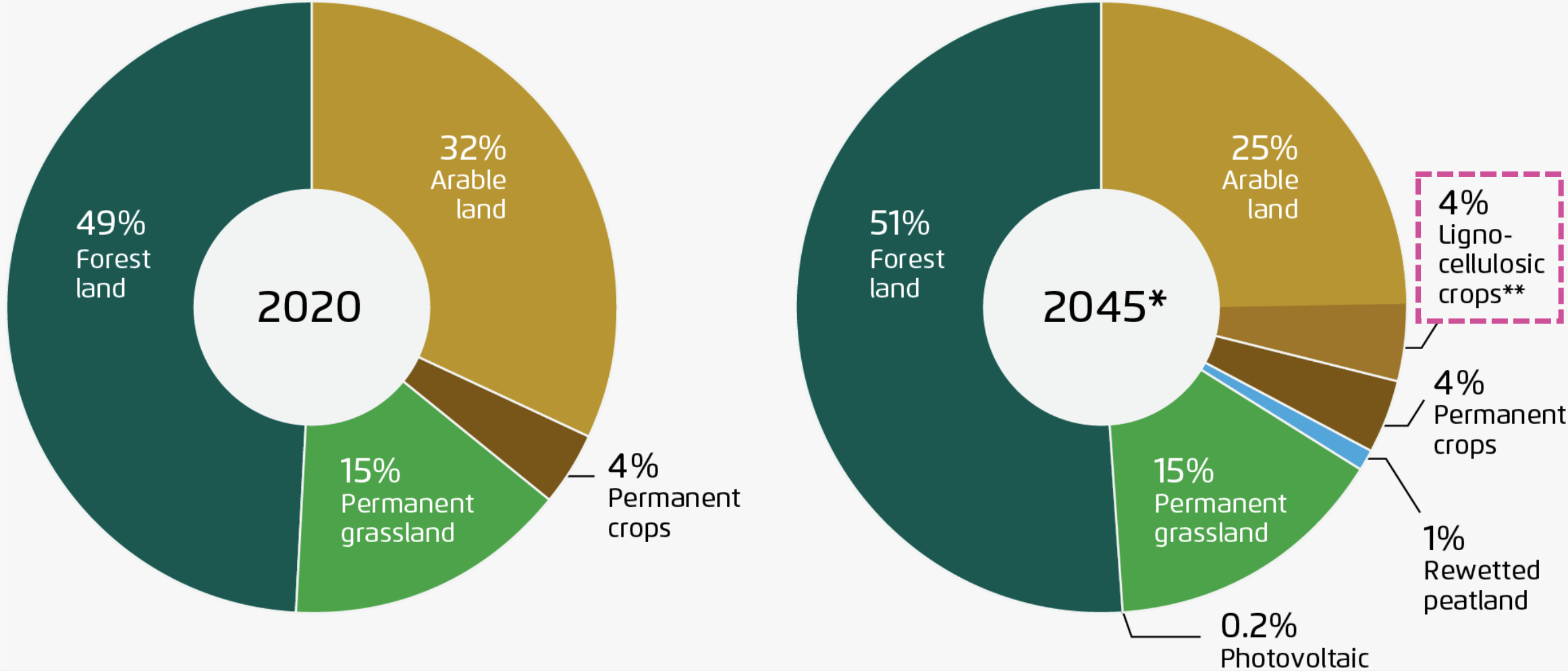
[MtCO₂eq]



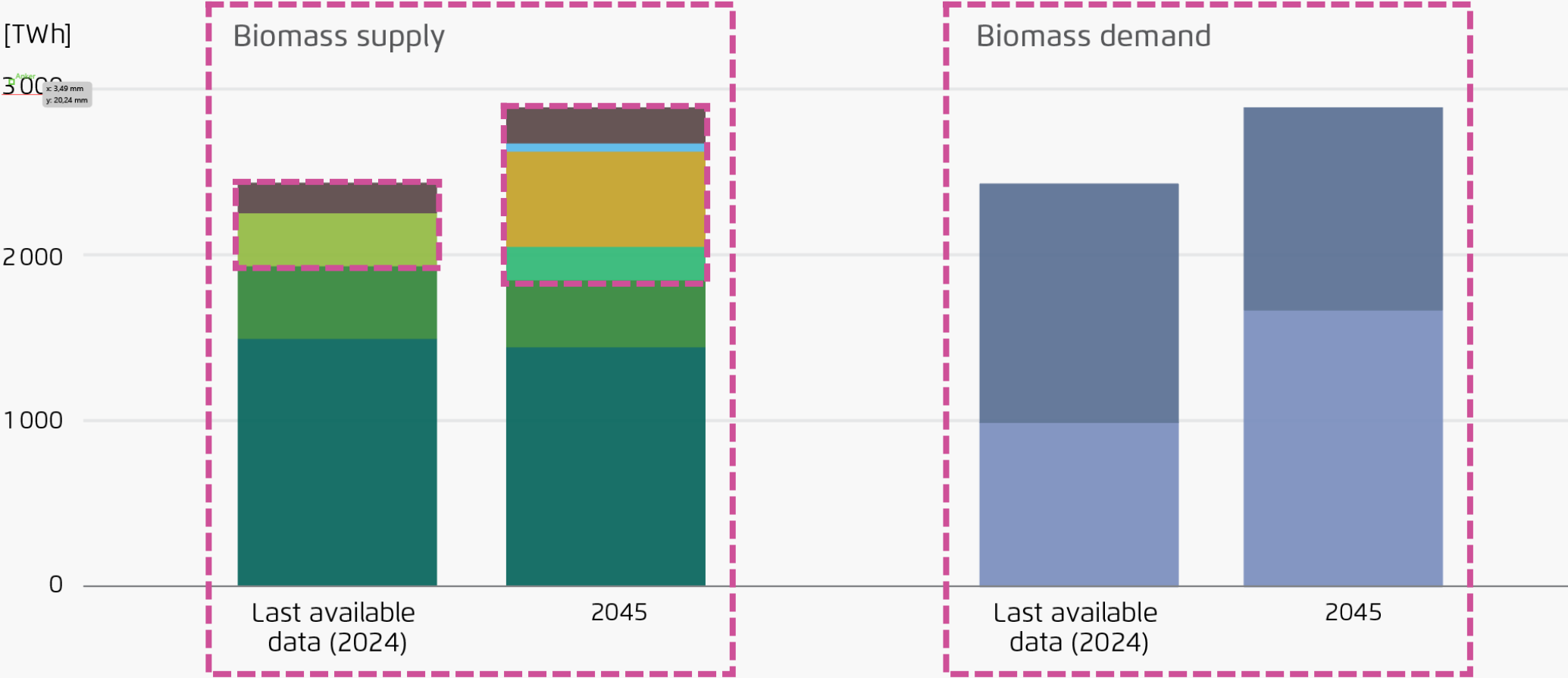
● Emissions from livestock and manure
 ● Emissions from agricultural soils
 ● Other emissions from agriculture
 ● Emissions from agricultural peatlands

2 | Agora Agriculture based on CAPRI results. * N₂O emissions from manure application under “livestock and manure”, N₂O emissions from organic soils under “agricultural peatlands”;
 ** estimate for emissions from agricultural peatlands with CAPRI data on organic soils and emission factors from IPCC (2014), see Annex Chapter 7

Land use in the EU agricultural and forestry sectors in 2020 and 2045

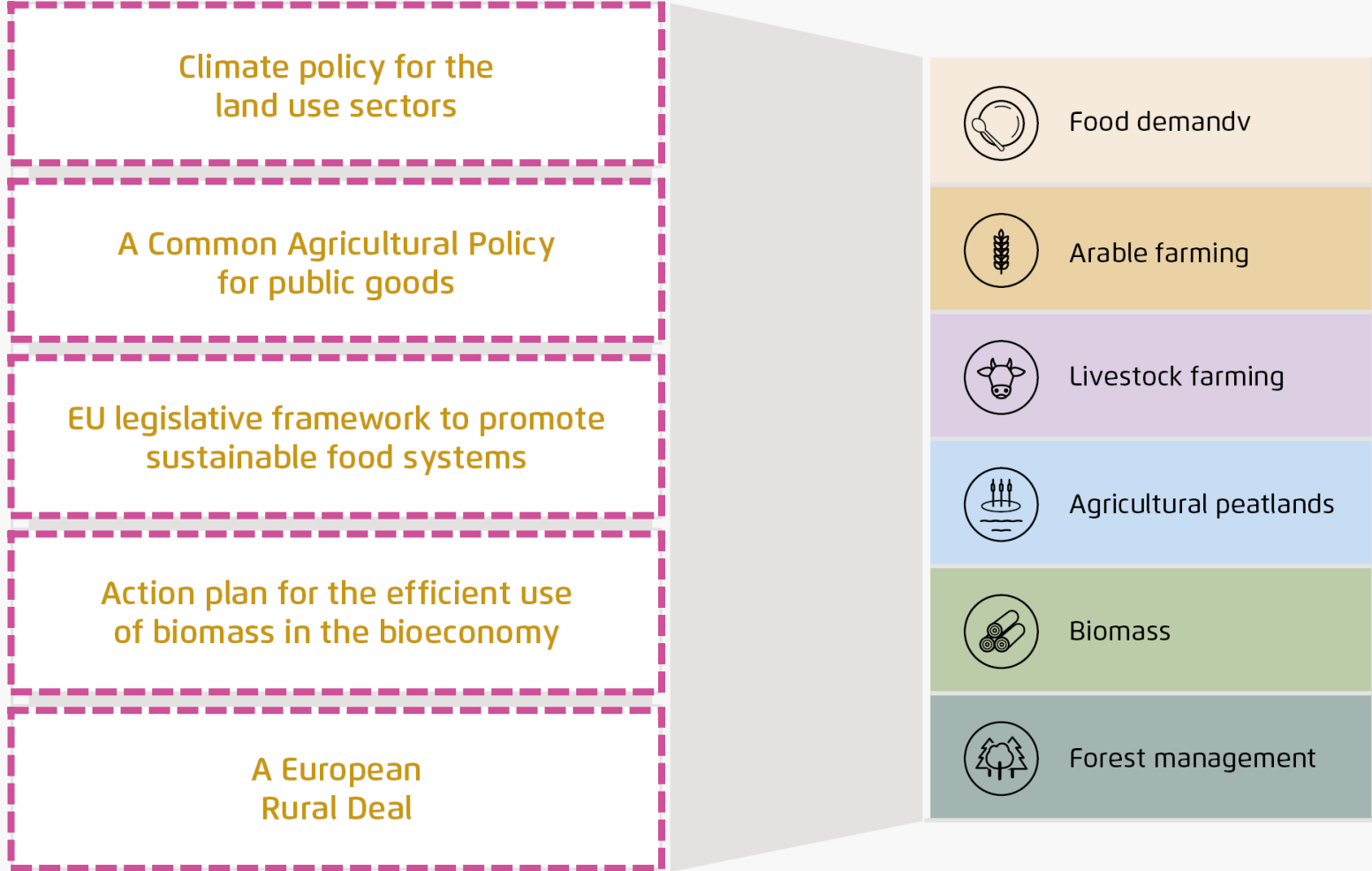


Demand and supply of biomass for the bioeconomy in 2024 and 2045



- Solid biomass from forests (incl. net imports)
- Co-products from the processing of forest biomass
- Dedicated crops and residues for biogas and first generation biofuels
- Residues for biogas production
- Lignocellulosic crops*
- Paludiculture
- Waste and recycling
- Materials
- Energy

EU cross cutting policy priorities



Sign up to the Agora Agriculture Newsletter



www.agora-agriculture.org